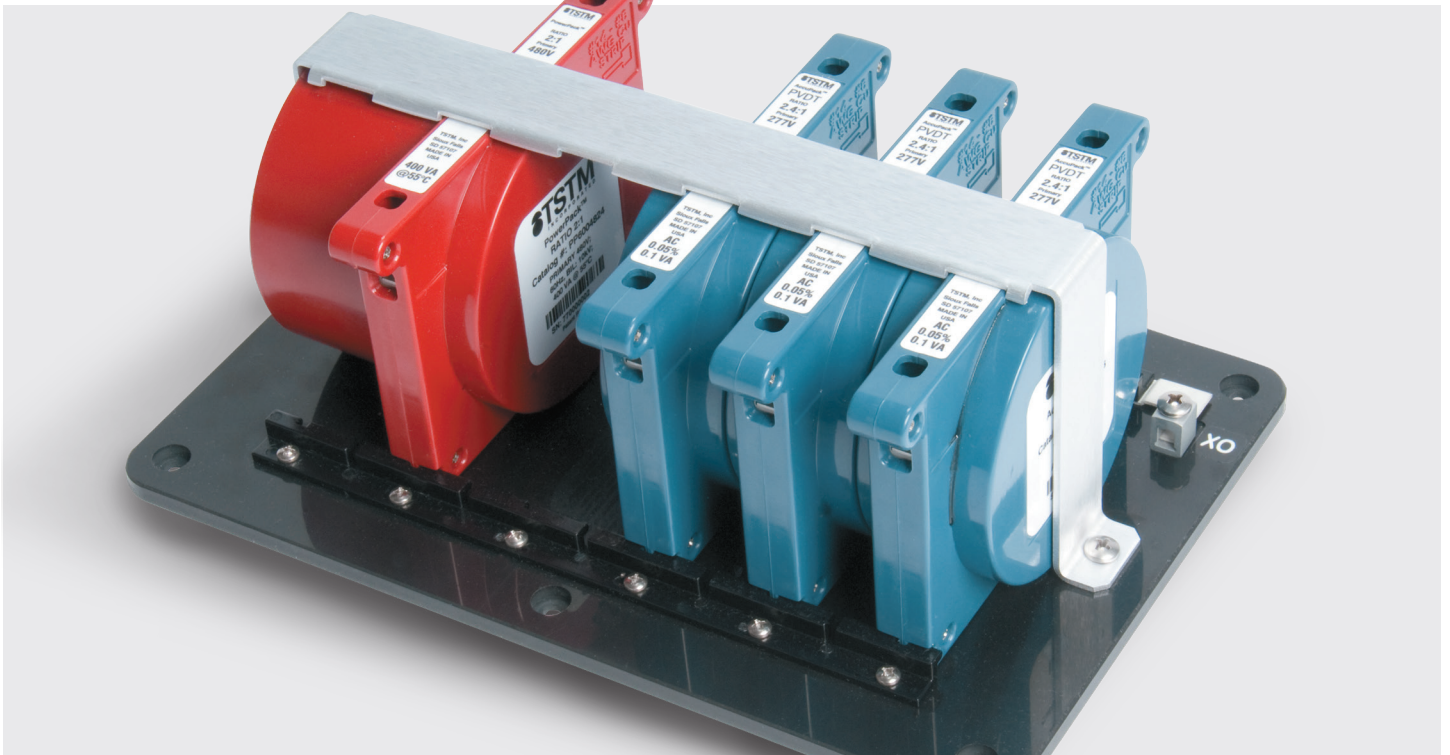


P	V	D	T
PRECISION	VOLTAGE	DIVIDING	TRANSFORMER

FlexPack™

SYSTEM



TSTM Metering Solutions: **ACCURATE. RELIABLE. SAFE.**

TSTM provides revolutionary metering products – helping you improve safety and revenues through more accurate and reliable electrical metering.





AccuPack™

For extreme accuracy for electrical meters with separate power supply input

AP6003012 2.5:1 0.1VA @PF 1 Primary: 277 V

AP60030125 2.4:1 0.1VA @PF 1 Primary: 277 V

AP6004812 4:1 0.1 VA @PF 1 Primary: 480 V

AP6004824 2:1 0.1 VA @PF 1 Primary: 240 - 480 V

AP6003612 3:1 0.1 VA @PF 1 Primary: 347 V

The AccuPack™ transformer version of the FlexPack™ System offers unheard of accuracy and dependability for critical applications. We certify accuracy of +/- 0.05%, but typical accuracies are even better.

The AccuPack™ consists of one to three revenue-accuracy toroidal autotransformers for use with either Form 109S modern wide voltage range electronic watthour meters, modified Form 9S wide voltage range electronic watthour meters or other meter Forms that are now available. The transformer is encased in epoxy inside a flame retardant polycarbonate enclosure.

The AccuPack™ mounts on a required TSTM Backplane very much like a single-phase residential circuit breaker. The Backplane, which can accept up to three AccuPacks™ and an optional PowerPack™, can be mounted in a pad mount transformer, transformer cabinet, in one of our enclosures designed for that purpose, or other convenient location. Perfect outdoors when enclosed within a TSTM exterior cabinet or other enclosure.



PowerPack™

Transformers for powering the power supply in today's new meters

PP6004824 2:1 400 VA (480:240)

The PowerPack™ is one of our specially designed toroidal autotransformers to provide power for a meter's wide voltage range power supply and any under-glass device, like power line carrier (PLC) technology, requiring connection to the power lines for purposes of communications. Since the meter's wide voltage range power supply as well as most PLC technologies can be powered at a voltage less than the service voltage, a 2:1 ratio is adequate for most applications. The transformer is encased in epoxy inside a flame retardant polycarbonate enclosure.

The PowerPack™ normally used with one or more AccuPacks™ mounts on a required TSTM Backplane very much like a single-phase residential circuit breaker. The Backplane can be mounted in a pad mount transformer, transformer cabinet, in one of our enclosures designed for that purpose, or other convenient location. Perfect outdoors when enclosed within a TSTM exterior cabinet or other enclosure.



FlexPack™

Precision Voltage Dividing Transformer (PVDT) system

The next generation in precision power management for metering applications, the TSTM FlexPack™ system configures instantly as required: 2:1, 4:1, 3-wire, 4-wire, wye, delta, etc.

One version of the TSTM FlexPack™ System is the next generation form-factor of TSTM's famous VT Pack™ for metering applications. The other version of the FlexPack system uses our Accupack transformers, where you'll reap the benefits of the extreme accuracy of tomorrow's electrical meters that will require a separate, voltage source for the meter's power-supply that we refer to as our PowerPack™. Both systems use a transformer/mounting-plane system we call our Backplane that allows configuration as needed in seconds.

Modules include:



VersaPack™

For traditional transformer-rated metering applications

VPA6004812 4:1 12.5VA

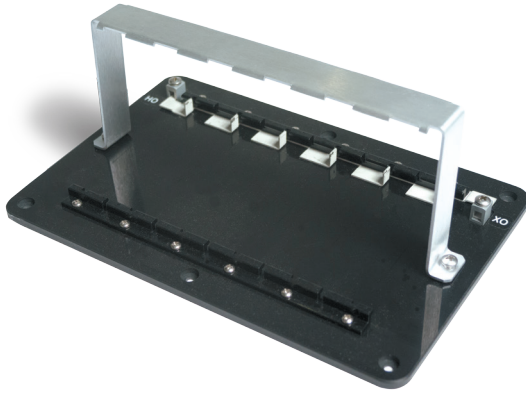
VPA60030125 2.4:1 12.5VA

VPA6004824 2:1 12.5VA

VPA6003012 2.5:1 12.5VA

VersaPack™ modules are very similar to the components in our guaranteed VT Packs® in an updated form factor, allowing individual installation as required.

The VersaPack™ version of the FlexPack™ System, consists of one, two or three revenue-accuracy toroidal autotransformers for use with modern wide voltage range electronic meters or older induction (disk-type) meters. The transformer is encased in epoxy inside a flame retardant polycarbonate enclosure and mounts on a required TSTM Backplane very much like a single-phase residential circuit breaker. The Backplane, which can accept up to three VersaPacks™, can be mounted in a pad mount transformer, transformer cabinet, in one of our enclosures designed for that purpose, or other convenient location. Perfect outdoors when enclosed within a TSTM exterior cabinet or other enclosure.



Backplane Mounting System

All VersaPack, AccuPack and PowerPack modules snap in and out of the easily-installed Backplane, allowing you to configure each installation as needed. Applications for 4 wire wye, 4 wire delta and 3 wire delta as well as others can be easily accomplished with the versatile Backplane. Configures in seconds.



Enclosures – Long/Short

It's coming—to avoid suiting up every time your utility workers work on a meter, 480 volts will need to come out of the meter cabinet. The enclosures are powder coated steel and the FlexPack™ mounts quickly using the backplane in the pre-drilled and tapped holes with the stainless steel screws that are included in our custom cabinet, perfectly fitted to the new flexible system! If the VT Pack is your system of choice, the Long Enclosure has shoulder rivets for easy VT Pack mounting. Mated to your new or existing meter cabinet with our rubber gasket, you'll be ahead of the game, and your people will be safer for it.

For other applications or products, visit ts-tm.com or see our product catalogue.



TSTM, INC.

2900 Sencore Drive, Suite 100
Sioux Falls, South Dakota 57107
Phone 1-605-334-2924
Fax 1-605-334-4713

ts-tm.com
